

Walker Ranch

LEGEND

Restrooms

Picnic Table

Historic Site

Trailhead Parking

Scenic Overlook

Multi-use Trail
(pedestrian, equestrian, bikes)

Picnic Shelter

Fishing

Paved Road

Unpaved Road

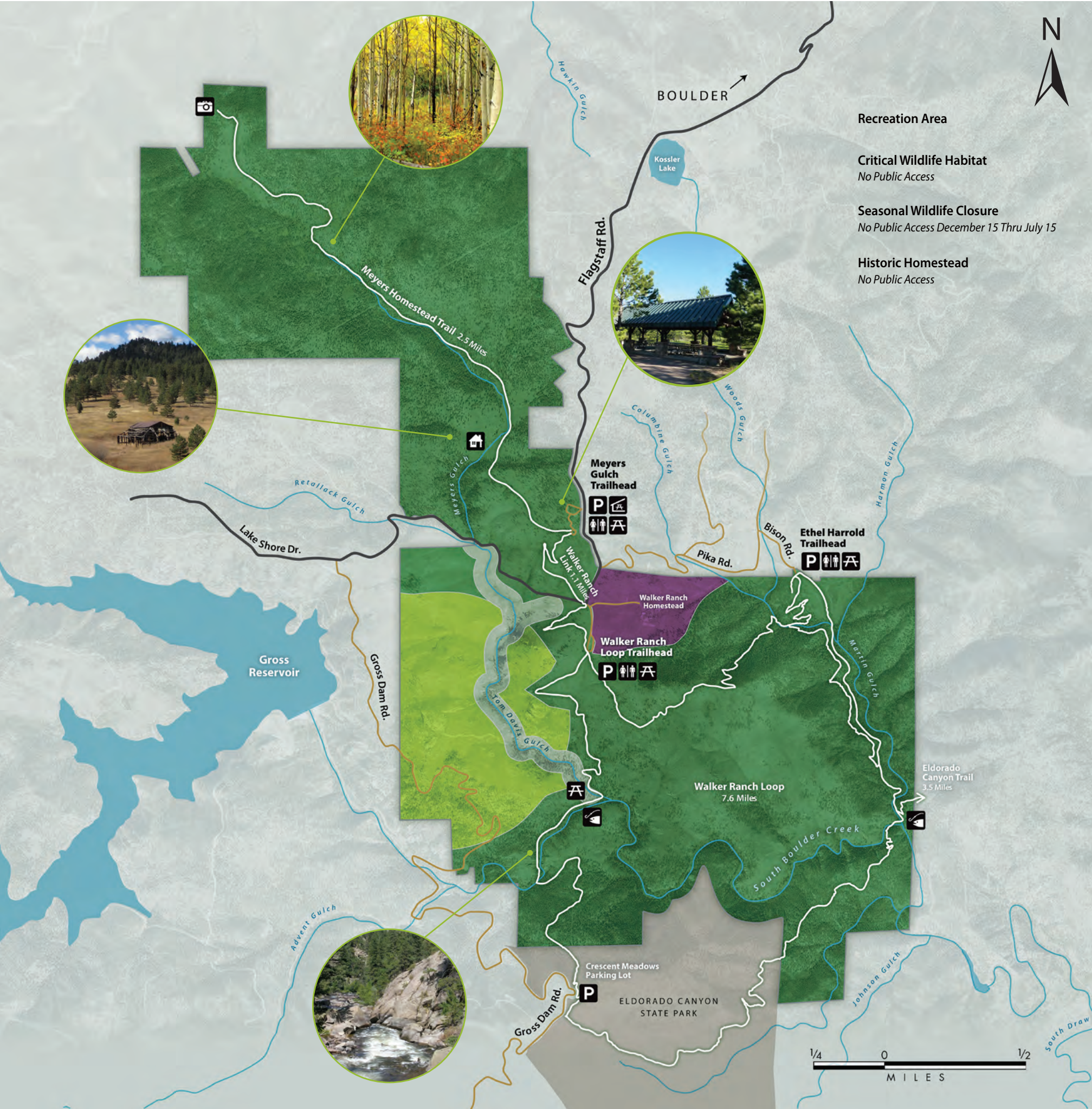
LOCATION

Approximately 7.5 miles west of Boulder on Flagstaff Road

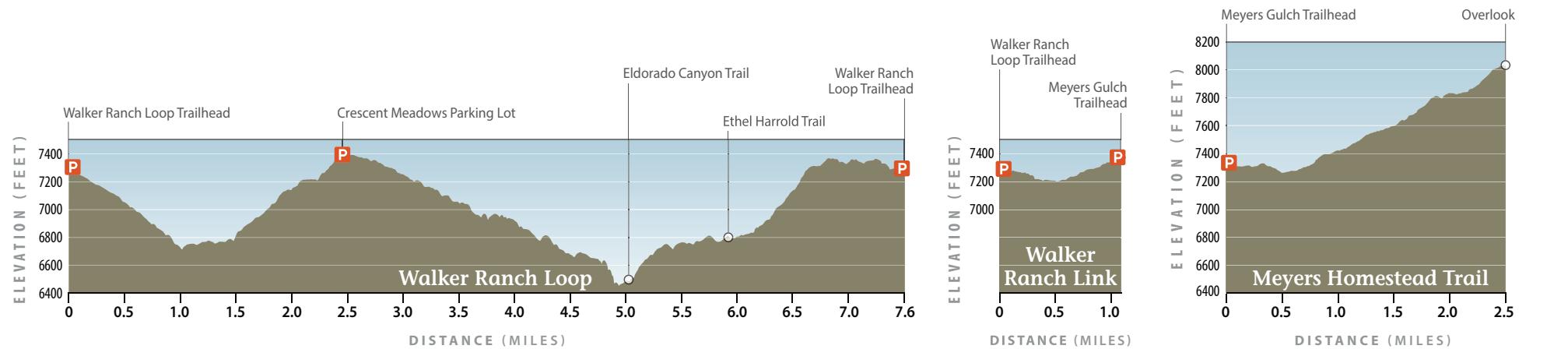
Connect

www.BoulderCountyOpenSpace.org

- maps and directions
 - current trail conditions
 - property information and photos
 - current news and events
 - download free GPS Trails App
- facebook.com/BoulderCountyOpenSpace
- @BoulderCountyOS



TRAIL PROFILES



7.6 miles – 892 feet elevation gain (counter clockwise)

1.1 miles – 163 feet elevation gain

2.5 miles – 749 feet elevation gain