

*To deliver, fund, and advocate for services that promote well-being,
independence, and dignity for older adults, people with disabilities, family
caregivers, and veterans in Boulder County*

**BOULDER COUNTY AREA AGENCY ON AGING ADVISORY COUNCIL
(AAC)**

**Nederland Community Presbyterian Church
(210 N. Jefferson St., Nederland, CO 80466)**

Friday, September 6

9:00 a.m. – Noon

- | | |
|-------|---|
| 8:45 | Gather, Coffee, Visiting |
| 9:00 | Welcome – Dale Porter
Comments from the Chair – Dale Porter
Public Comments and Correspondence
Additions to the Agenda
Approve August 2019 Minutes |
| 9:15 | Technology Mobility Ambassador Program
Mountain Community Volunteer Driver Program
<i>Angel Bond</i> |
| 9:45 | Update from Nederland Area Seniors/Mountain Peak Life
<i>Nicole Cavalino</i> |
| 10:00 | BREAK |
| 10:15 | AAC Aging in Community Subcommittee Presentation |
| 11:00 | Subcommittee Work Time |
| 12:00 | Adjourn |

Next meeting of AAC:
Friday, October 4, 2019
9 a.m. – 12 p.m.
Location: Frasier (Boulder)

Reasonable accommodations will be provided upon request for persons with disabilities. Please contact Julia Yager, ADA Coordinator or the Human Resources Division, at 303-441-3525 at least 48 hours prior to the scheduled event.



Assistance. Advocacy. Answers on Aging.



AAC members = 18

Quorum = 10

To deliver, fund, and advocate for services that promote well-being, independence, and dignity for older adults, people with disabilities, family caregivers, and veterans in Boulder County

BOULDER COUNTY AREA AGENCY ON AGING ADVISORY COUNCIL (AAC)

MINUTES: September 6, 2019
Nederland Community Presbyterian Church, Nederland, CO

AAC Members Present: Dena Boutwell, Judith Brush, Patrick Egan, Jeff Foster, Kellie Hudson, Michele Hurliman, Andrew Lattanzi, Mary Jo Manydeeds, Judy Mares-Dixon, Dave Pinkow, Dale Porter, Carren Williams

Staff Present: Guio Bravo, Carol Cross, Ali Hasert, Carlene Okiyama, Christine Vogel

Excused: Sara Beery, Pamela Christensen, Stephanie Dunn, Patricia Feeser, Tom Genovese, Bill Marine, Jessica O'Leary, Rebecca Paskind, Chuck Stout

Guest(s): Jeanine Tarrani, Nicole Cavalino, Angel Bond, Serene Karplus, Jim Guertin

Welcome and Comments from the Chair – Dale Porter, Co-Chair:

Dale Porter explained to the council that AAC subcommittee meetings need to either meet during the designated one-hour time slot, during the monthly AAC meetings, or they can schedule a meeting outside of this designated time slot, which must be publicly posted. He stressed that casual meetings between three to four people and discussions over email are strictly prohibited.

Dale Porter mentioned that within the next few months, the World Health Organization (WHO) is expected to post results of a global investigation for age discrimination. He explained one of the contributions to the WHO report – research which supports the theory that older adults absorbing positive images and words on aging, age more successfully with better rates in balance, walking speed, and memory retention. Dale challenged the council to consider how they might incorporate this knowledge into their communities.

Public Comments and Correspondence:

None

Additions to the Agenda:

None

Approve August 2019 Minutes:

Jeff Foster moved that the council accept the August 2019 meeting minutes. Michele Hurliman seconded, and the motion passed unanimously.

Technology Mobility Ambassador Program & Mountain Community Volunteer Driver Program – Angel Bond:

Angel Bond introduced herself to the council as the Mobility for All (M4A) Program Manager, which is nestled under Boulder County’s Transportation Department. She mentioned that she works to create transportation options for older adults and is facilitating an inclusive planning effort. She shared two current projects that the Inclusive Planning Steering Committee is working on – a volunteer driver program in the mountains and a technology education program for transportation apps such as Uber, Lyft, etc.

Angel Bond shared that the Planning Steering Committee is looking to identify ambassadors for each community within Boulder County. She mentioned that they are looking for one older adult, one disabled adult, and one bilingual adult from each community to test transportation platforms. She invited council members to reach out to her directly if they are interested in participating.

Update from Nederland Area Seniors/Mountain Peak Life – Nicole Cavalino:

Serene Karplus introduced herself to the council as the former director of the Nederland Area Seniors. Serene introduced Nicole Cavalino to the council as the new director of the Nederland Area Seniors. Nicole Cavalino noted her first accomplishment since accepting her position, which was creating an emergency preparedness panel that led to a well-organized community discussion and an emergency alert registration event. Nicole Cavalino shared her goal to coordinate partnerships with local businesses and friends to create a community that discusses local issues. She noted that a new Falls Prevention class will start in September and that she is working with Boulder County’s AAA department to expand home meal delivery programs.

AAC Aging in Community Subcommittee Presentation:

Carol Cross presented the following Boulder County data to the council – neighborhood density maps, net migration by age, bus utilization by age, call center data, AARP Livability Index. She noted that the Aging in Community subcommittee will be using this data to quickly identify areas of concern to figure out how they can target their efforts. The following questions arose during the Aging in Community subcommittee presentation:
Net Migration by Age Data – Dale asked where the net migration data is identified from and what the sources of influx and outflux are. Does this data include permanent residents? Is this data from the University of Colorado (CU) and geared towards college students? Does this data include CU students?

Transportation Modes by Utilization – Pat asked if older adults are ages 60 and up in this model.

Carol Cross and the Aging in Community subcommittee presented Boulder County's ratings on the AARP Livability Index. By using this data, the subcommittee then presented their short-term, mid-term, and long-term action items by category.

Housing Adaptability

- Short: Identify and meet with partners
- Mid: Determine feasible action items:
 - Zero-step entrances
 - Chores
 - Adaptations/Modifications
- Long: Implement action items

Pat suggested making a checklist available on the website for members of the public to see if their home is setup successfully to age in place.

Transportation

- Short: Identify and meet with partners
- Mid: Determine feasible action items:
 - Master Transportation Plan advocacy
 - Funding advocacy
 - Connection to other services/health care
 - Limited transit services (Erie)
 - Ebikes – advocacy, training, education
- Long: Implement action items

Access to Health Care

- Short: Identify current options and partners, define areas of need
- Mid: Determine feasible action items:
 - Telehealth
 - Expansion of home health
 - Transportation/access opportunities
- Long: Implement action items

Social Isolation

- Short: Identify current programs, choose area of focus
- Mid: Determine feasible action items:
 - Intergenerational opportunities and housing
 - Outreach Plan – Model for Mountain programming outreach
- Long: Implement action items

Pat mentioned that CU has a program called Senior Stories, where college students connect with seniors and receive college credit in return.

Subcommittee Work Time

Meeting adjourned at 12:00 p.m.

Submitted by Ali Hasert

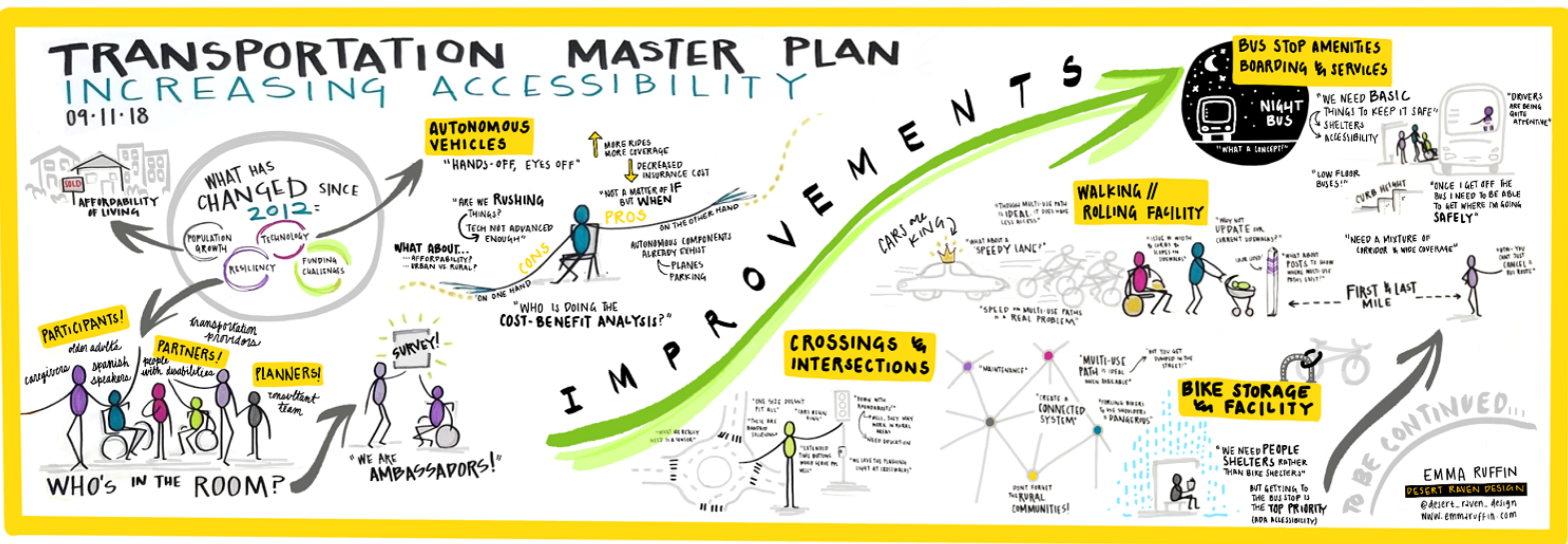
Next meeting of AAC:
Friday, October 4, 2019
9 a.m. – 12 p.m.
Location: Frasier Meadows (Boulder)



MOBILITY FOR ALL

2018 INCLUSIVE PLANNING PROCESS

Boulder County Mobility for All (M4A) updated the Transportation Master Plan Increase Accessibility Chapter using the Inclusive Planning Public Participation Framework. We created a steering committee, which consisted of 17 older adults, people with disabilities, and caregivers, and 6 Local Coordinating Council partner organizations. The steering committee represented a diverse range of ages, ability levels, and income levels from across the county and developed six priority areas to increase accessibility for county residents of all ages and abilities. The committee developed the following priority areas:



PRIORITY AREAS

- Increase Availability of Accessible Evening, Weekend, and Rural Services
- Develop a Network of Community Ambassadors to Address Mobility Challenges
- Overcome Technology Barriers through Education and Outreach
- Implement a Culturally Responsive and Inclusive Engagement Strategy
- Develop a Low-Stress Bike Network and eBike/Trike Programing for All Residents
- Prioritize Infrastructure & Safety in Areas of High Concentration of Vulnerable & Underserved Populations





Inclusive Planning Steering Committee, Oct Meeting

TMP COMMUNITY SURVEY

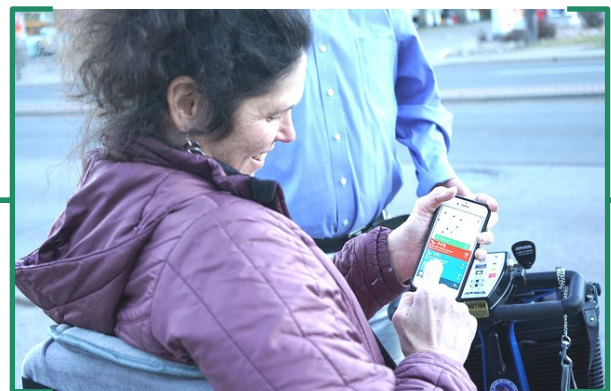
The Inclusive Planning Steering Committee developed an outreach strategy to ensure the voices of target populations were captured in the Boulder County Transportation Master Plan Community Survey. Total survey respondents 1,955, respondents from target population groups (self-identified):

- 62 – 60+ years old
- 153 - People with disabilities
- 157 – Caregivers
- 76 – Spanish Surveys
- 135 - Hispanic or Latino

SOCIAL MEDIA STRATEGY

The Inclusive Planning Steering Committee developed a Social Media Outreach Strategy to reach older adults, people with disabilities, and caregivers and to positively reflect their transportation needs.

- 10 Personal Stories
- 2 Photo Shoots
- 6 Social Media Templates
- 6 weeks of social media content
- 5 Videos
- 3 Targeted Campaigns on Twitter & Facebook



ROUND 2 INCLUSIVE PLANNING PROJECTS IN 2019

- Create Volunteer Driver Program Business Plan for the Boulder County Mountain Communities
- Develop Technology Training and Ambassador Program to Assist All Residents in Accessing Transportation-Related Smartphone Applications





AGING IN COMMUNITY

SUBCOMMITTEE PRESENTATION – SEPTEMBER 6, 2019

INITIAL INTERESTS IN AGING IN COMMUNITY

- Resource Navigation
- In-Home Services and Supports
- Community Development
 - Front Range/Urban communities
 - Mountain communities

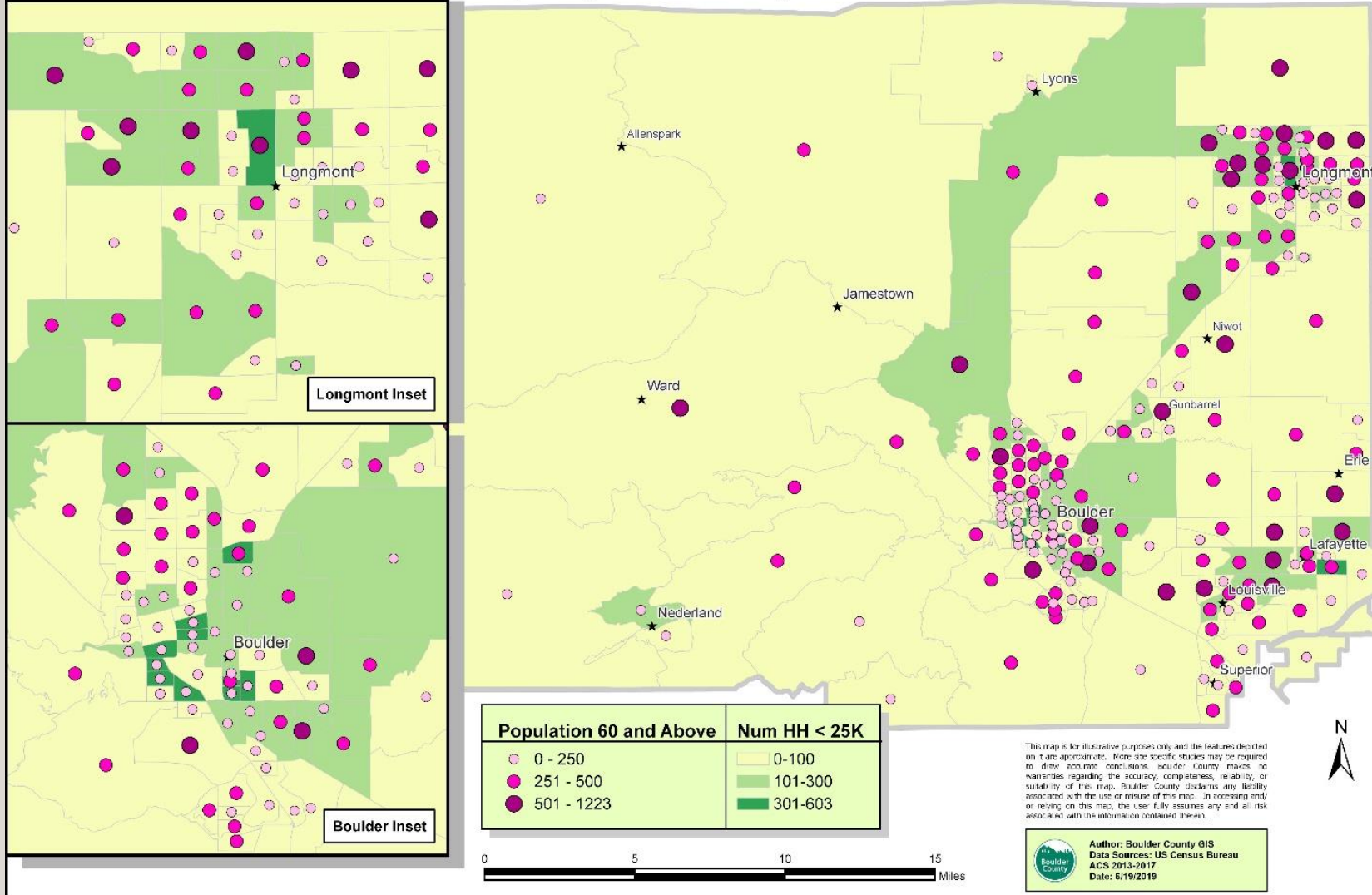


BOULDER COUNTY DATA



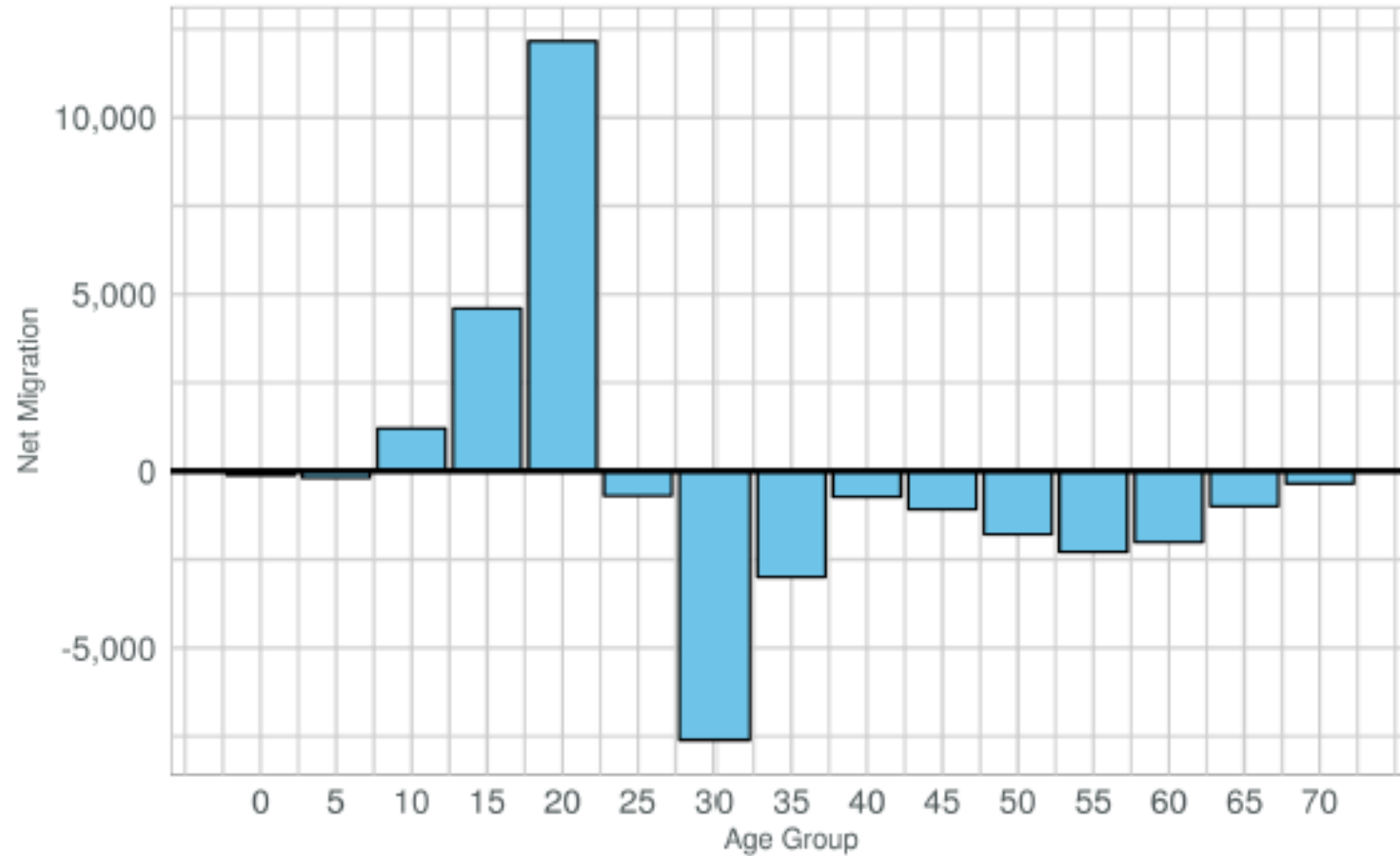
- Neighborhood Density Maps
 - Net Migration By Age
 - Bus Utilization by Age
 - Call Center Data
- AARP Livability Index
 - Boulder County
 - Boulder
 - Lafayette
 - Longmont
 - Louisville
 - Mountain Communities
 - Superior/Erie

Boulder County Households with Incomes Less than \$25,000 / Year and the Number of People 60yrs and Older by Census Block Group -- 2017



Net Migration by Age: 2000-2010

Boulder County



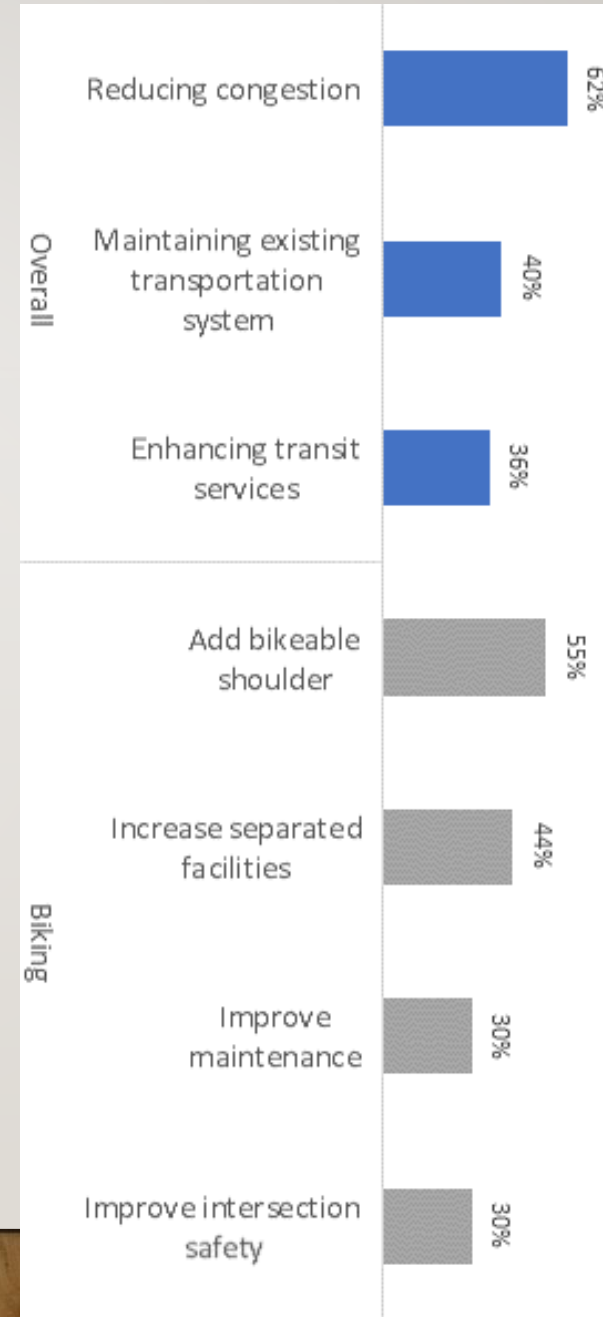
Source: State Demography Office, Print Date: 08/23/2019

TRANSPORTATION MODES BY UTILIZATION IN BOULDER COUNTY OLDER ADULTS

Transportation Mode	Mode Used At least Once/Week
Drive alone	81%
Walk	43%
Bike	31%
Transit (bus)	28%
Get a ride	26%
Paratransit	14%
Taxi, Uber, Lyft	7%
Carpool/vanpool	5%
Wheelchair/mobility device	2%
Other	1%

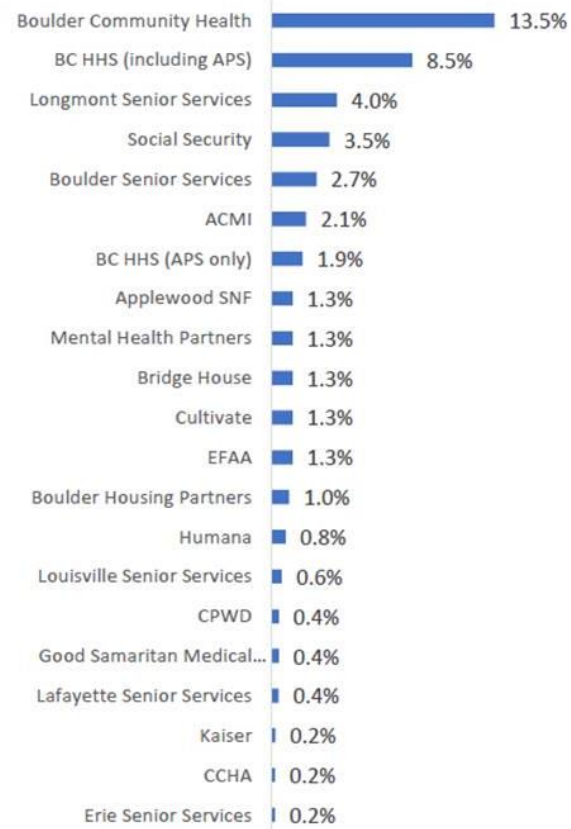


OLDER ADULTS REPORT OF NEEDED TRANSPORTATION IMPROVEMENTS BY MODE

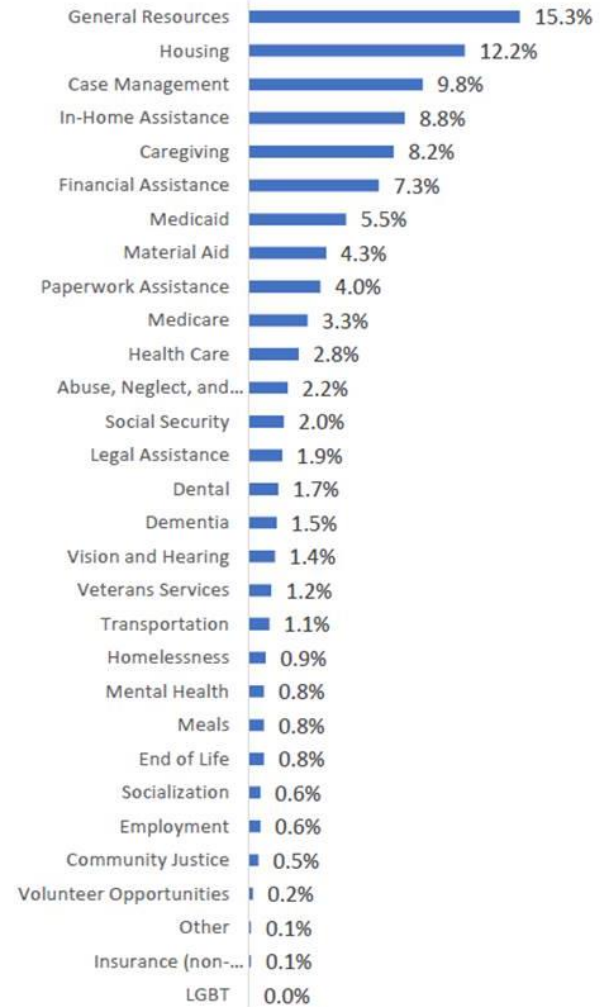


ADRC CALL CENTER DATA

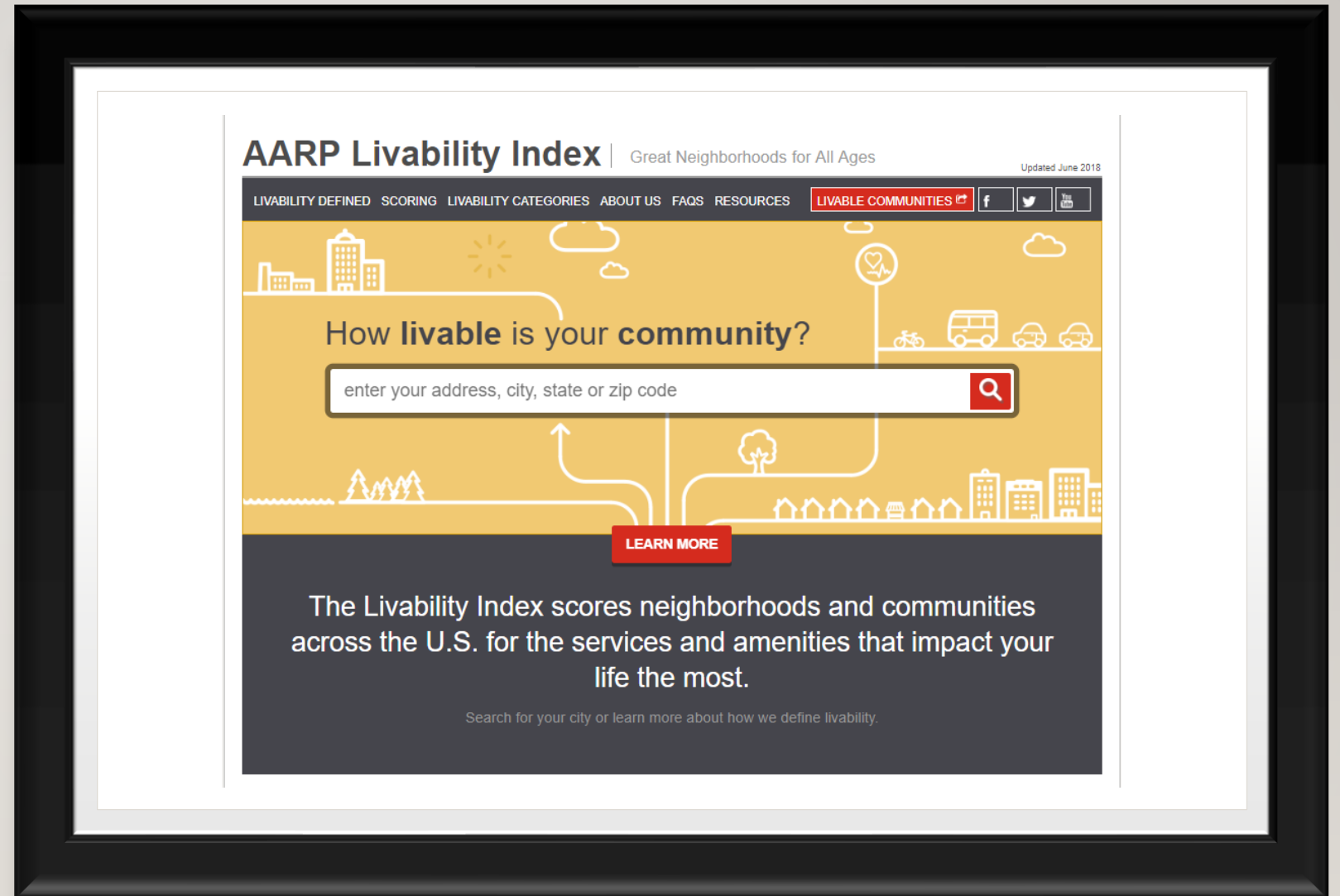
**ADRC Calls Involving Other Organizations
(Direct and Indirect Involvement)**



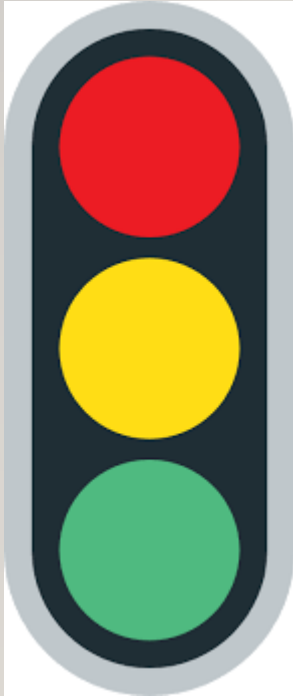
Frequency of ADRC Callers' Service Needs and Situations



AARP LIVABILITY INDEX



LIVABILITY INDEX SCORING



- Housing
- Neighborhood
- Transportation
- Environment
- Health Engagement
- Opportunity

TOTAL INDEX SCORE



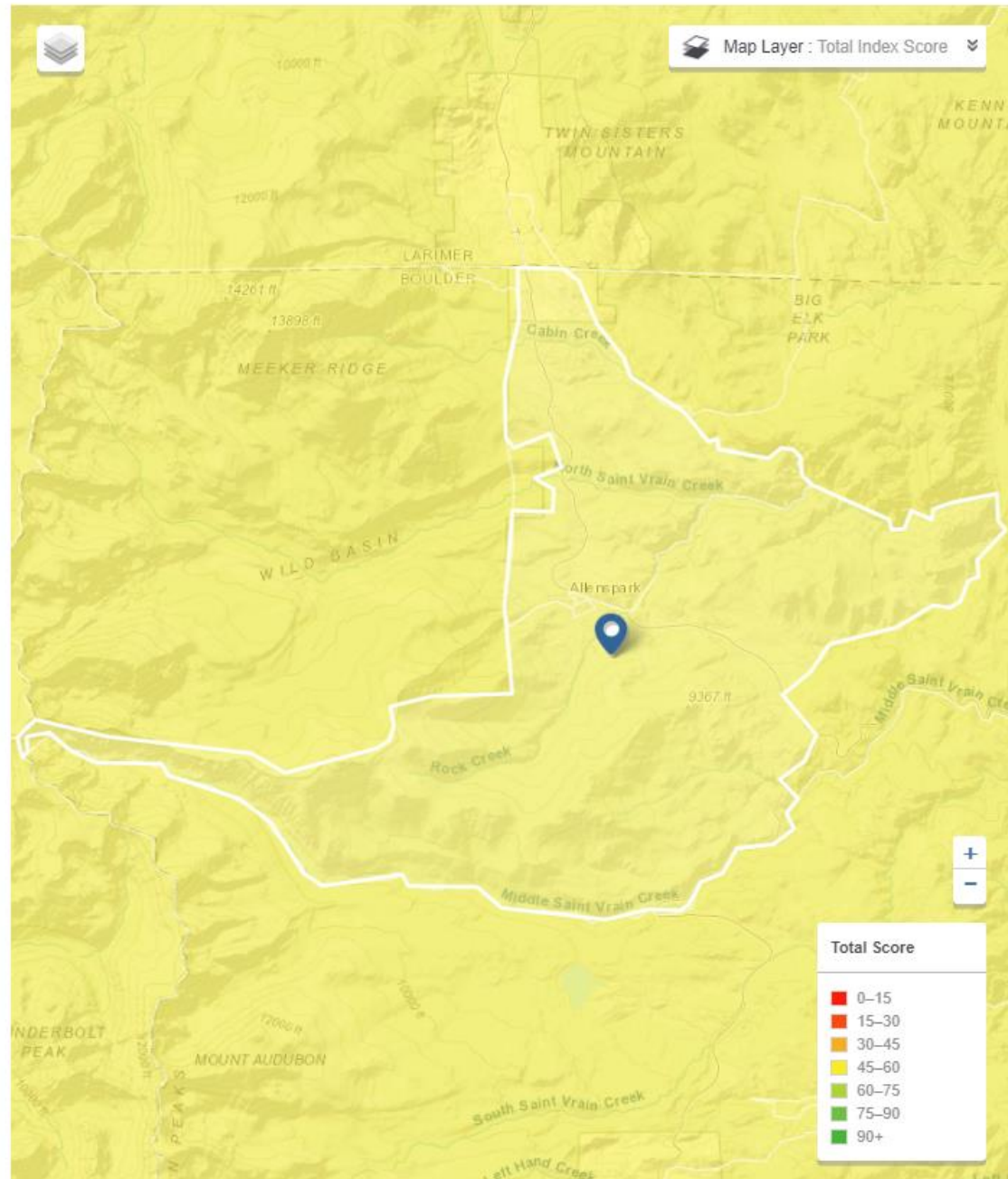
[Livability Score](#) [?](#)

CATEGORY SCORE

- 57** **HOUSING**
Affordability and access >
- 20** **NEIGHBORHOOD**
Access to life, work, and play >
- 31** **TRANSPORTATION**
Safe and convenient options >
- 56** **ENVIRONMENT**
Clean air and water >
- 76** **HEALTH**
Prevention, access and quality >
- 81** **ENGAGEMENT**
Civic and social involvement >
- 45** **OPPORTUNITY**
Inclusion and possibilities >

DO MORE WITH THIS SCORE

- Adjust category importance
- Track livability progress over time
- Compare to other locations



TOTAL INDEX SCORE



[Livability Score](#) ?

CATEGORY SCORE

57	HOUSING Affordability and access	
20	NEIGHBORHOOD Access to life, work, and play	>
31	TRANSPORTATION Safe and convenient options	>
56	ENVIRONMENT Clean air and water	>
76	HEALTH Prevention, access and quality	>
81	ENGAGEMENT Civic and social involvement	>
45	OPPORTUNITY Inclusion and possibilities	>



HOUSING

Affordability and access

[Share this score](#) ↗



They say home is where the heart is—and the same holds true for the Livability Index. Housing is a central component of livability. Deciding where to live influences many of the topics the Index covers. We spend more time in our homes than anywhere else, so housing costs, choices, and accessibility are critical. Great communities provide housing opportunities for people of all ages, incomes, and abilities, allowing everyone to live in a quality neighborhood regardless of their circumstances.

Metrics

Policies

How does my community compare to neighborhoods across the country?

● TOP THIRD ● MIDDLE THIRD ● BOTTOM THIRD ○ MISSING DATA

+	Housing accessibility ZERO-STEP ENTRANCES	43.6% of units ○ Median US neighborhood: 43.6%
+	Housing options AVAILABILITY OF MULTI-FAMILY HOUSING	3.3% of units are multi-family ● Median US neighborhood: 17.8%
+	Housing affordability HOUSING COSTS	\$798 per month ● Median US neighborhood: \$989
+	Housing affordability HOUSING COST BURDEN	9.6% of income spent on housing ● Median US neighborhood: 17.9%
+	Housing affordability AVAILABILITY OF SUBSIDIZED HOUSING	0 units per 10,000 people ● Median US neighborhood: 0



HOUSING

Affordability and access

[Share this score](#)



They say home is where the heart is—and the same holds true for the Livability Index. Housing is a central component of livability. Deciding where to live influences many of the topics the Index covers. We spend more time in our homes than anywhere else, so housing costs, choices, and accessibility are critical. Great communities provide housing opportunities for people of all ages, incomes, and abilities, allowing everyone to live in a quality neighborhood regardless of their circumstances.

Metrics

Policies

How does my community compare to neighborhoods across the country?



TOP THIRD



MIDDLE THIRD



BOTTOM THIRD



MISSING DATA



Housing accessibility
ZERO-STEP ENTRANCES

43.6% of units



Median US neighborhood: 43.6%



Housing options
AVAILABILITY OF MULTI-FAMILY HOUSING

3.3% of units are multi-family



Median US neighborhood: 17.8%

Percentage of housing units that are not single-family, detached homes: measured at the neighborhood scale, higher values are better

The majority of U.S. homes are single-family, detached houses that are often well-suited for families with children. However, a growing number of people are choosing smaller, more space- and cost-efficient homes. Older adults whose children have moved out or whose spouses have passed away, single-parent families, childless couples, or people who choose to share housing with roommates may all prefer multi-family housing. Livable communities offer housing for any situation, which is why the Index measures the percentage of housing units in a community that are not single-family, detached homes.

[Source](#)



HOUSING

Affordability and access

[Share this score](#)



They say home is where the heart is—and the same holds true for the Livability Index. Housing is a central component of livability. Deciding where to live influences many of the topics the Index covers. We spend more time in our homes than anywhere else, so housing costs, choices, and accessibility are critical. Great communities provide housing opportunities for people of all ages, incomes, and abilities, allowing everyone to live in a quality neighborhood regardless of their circumstances.

Metrics

Policies



[Housing accessibility](#)

[STATE AND LOCAL INCLUSIVE DESIGN LAWS](#)

[No Policy](#) ☐



[Housing affordability](#)

[STATE AND LOCAL HOUSING TRUST FUNDS](#)

[No Policy](#) ☐



[Housing options](#)

[STATE MANUFACTURED HOUSING PROTECTIONS](#)

[No Policy](#) ☐



[Housing affordability](#)

[STATE FORECLOSURE PREVENTION AND PROTECTION](#)

[State Policy](#) ☒



[Comprehensive livability commitment](#)

[STATE AND LOCAL PLANS TO CREATE AGE-FRIENDLY COMMUNITIES](#)

[County Policy](#) ☒



HOUSING

Affordability and access

[Share this score](#) 



They say home is where the heart is—and the same holds true for the Livability Index. Housing is a central component of livability. Deciding where to live influences many of the topics the Index covers. We spend more time in our homes than anywhere else, so housing costs, choices, and accessibility are critical. Great communities provide housing opportunities for people of all ages, incomes, and abilities, allowing everyone to live in a quality neighborhood regardless of their circumstances.

Metrics

Policies



Housing accessibility

STATE AND LOCAL INCLUSIVE DESIGN LAWS

No Policy 

State and local laws that make housing accessible for people of all abilities

As Americans live longer, homes built for easy access are becoming more necessary. At a minimum, a house should be “visitable” for someone in a wheelchair. Visitability requires a zero-step entrance, wide doors and hallways, and a ground-floor bathroom. The Index gives credit to state and local governments that have established voluntary or mandatory policies to build housing with accessible features.

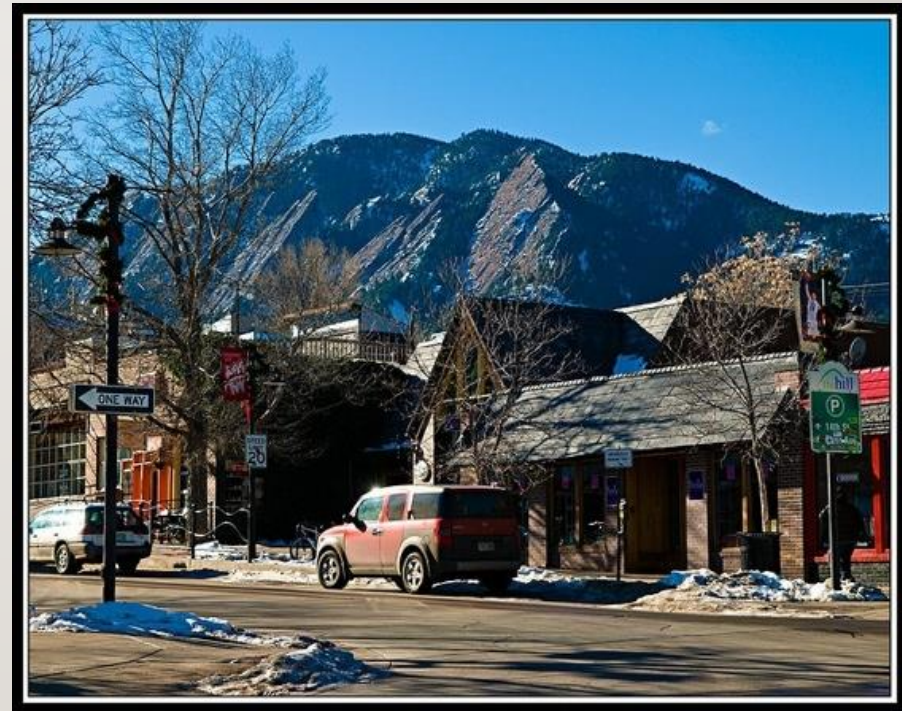
LIVABILITY INDEX – BOULDER COUNTY

HOUSING - 51

- Housing Affordability
- Zero-Step Entrances
- Modifications

NEIGHBORHOOD - 62

- Access to Libraries
- Access to Jobs



LIVABILITY INDEX – BOULDER COUNTY

TRANSPORTATION - 64

- Number of walking trips/day per household
- Traffic Congestion
- Household Transportation Costs
- Speed Limits
- Crash Rate

ENVIRONMENT - 46

- Water Quality
- Near road Pollution
- Industrial Pollution



LIVABILITY INDEX – BOULDER COUNTY

HEALTH - 80

- Access to Health Care



ENGAGEMENT - 69

- Social Engagement



LIVABILITY INDEX – BOULDER COUNTY

OPPORTUNITY - 59

- Income Inequality
- Community Age Diversity



FOCUS AREA GOALS



HOUSING ADAPTABILITY

- **Short:** Identify & meet with partners
- **Mid:** Determine feasible action items:
 - Zero-step entrances
 - Chores
 - Adaptations/Modifications
- **Long:** Implement Action Items

TRANSPORTATION

- **Short:** Identify & meet with partners
- **Mid:** Determine feasible action items:
 - Master Transportation Plan advocacy
 - Funding advocacy
 - Connection to other services/health care
 - Limited transit service (Erie)
 - Ebikes – advocacy, training, education
- **Long:** Implement Action Items

FOCUS AREA GOALS



ACCESS TO HEALTH CARE

- **Short:** Identify current options and partners, define areas of need
- **Mid:** Determine feasible action items:
 - Telehealth
 - Expansion of home health
 - Transportation/access opportunities
- **Long:** Implement Action Items

SOCIAL ISOLATION

- **Short:** Identify current programs, choose area of focus
- **Mid:** Determine feasible action items:
 - Intergenerational opportunities and housing
 - Outreach Plan – Model for Mountain programming outreach
- **Long:** Implement Action Items



THANKS

FOR YOUR ATTENTION!!

ANY QUESTIONS?

NO?

GREAT! BYE!